



GMT MONTHLY MEMBERSHIP PROGRESS REPORT

Results as of: 6/30/2020

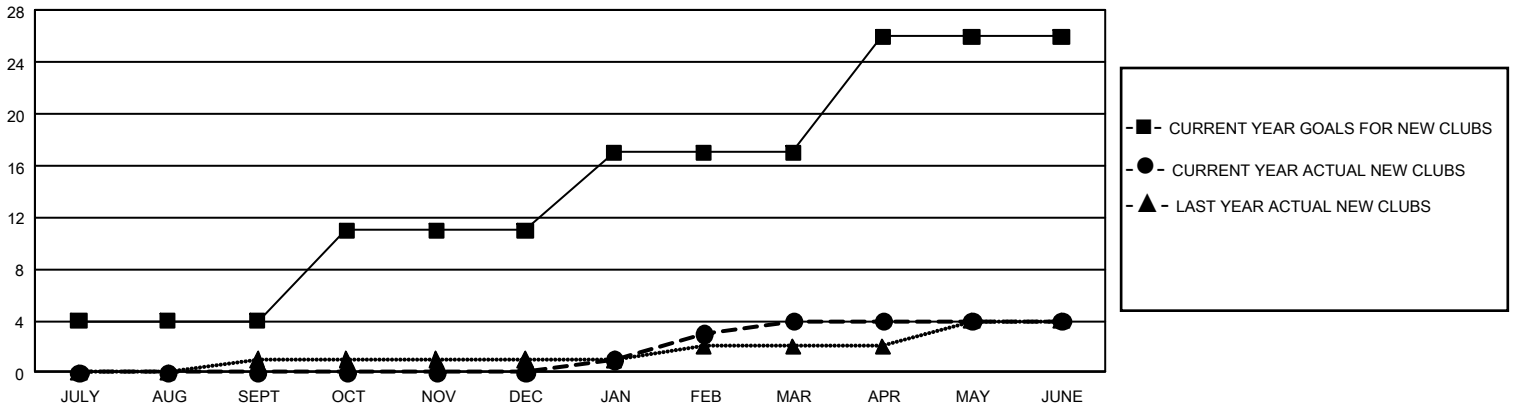
GMT Constitutional Area 1, Group N

GMT: OPEN

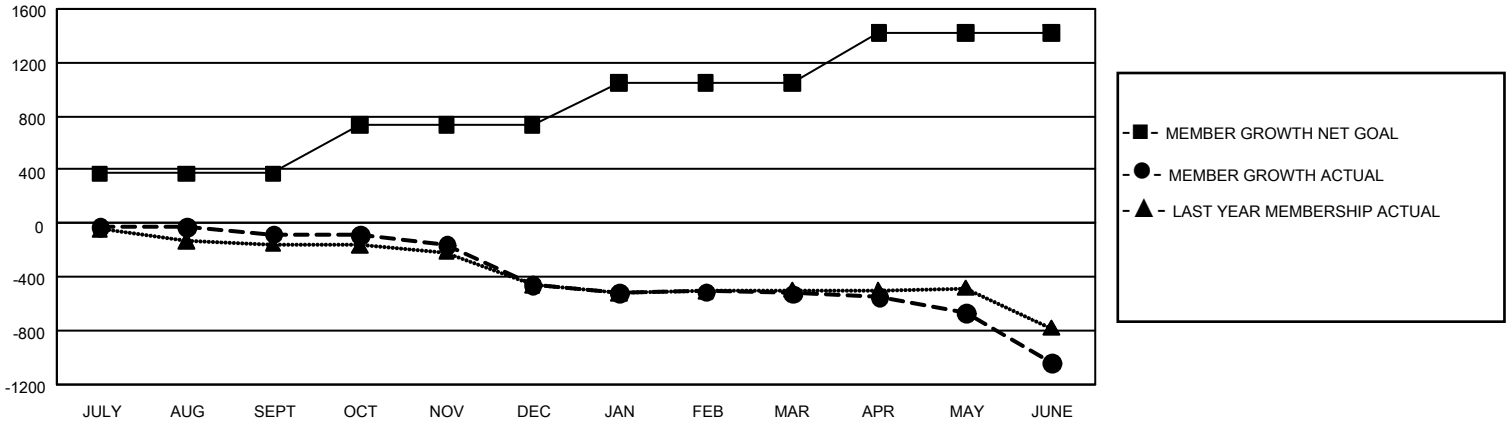
REPORT DOES NOT INCLUDE CLUBS IN UNDISTRICTED AREAS.

Clubs				Members			
RESULTS FOR 2019-2020				RESULTS FOR 2019-2020			
QUARTER	NEW CLUB GOAL	NEW CLUBS	DROPPED CLUBS	QUARTER	MEMBER GROWTH NET GOAL	MEMBER GROWTH ACTUAL	DROPPED MEMBERS ACTUAL (including transfers)
JULY/AUG/SEPT	12	0	1	JULY/AUG/SEPT	1,113	370	407
OCT/NOV/DEC	21	0	13	OCT/NOV/DEC	1,095	225	568
JAN/FEB/MAR	18	4	2	JAN/FEB/MAR	933	430	453
APR/MAY/JUNE	27	0	7	APR/MAY/JUNE	1,122	140	613

GOALS AND ACTUAL NEW CLUBS CUMULATIVE



GOALS AND ACTUAL MEMBERS CUMULATIVE



DROPPED CLUBS: 22	306 CLUBS OF 600 ADDED 1 OR MORE NEW MEMBERS	<u>GENDER DISTRIBUTION</u> MALE 8,785 (67.54%) FEMALE 4,223 (32.46%)
<u>DROPPED MEMBERS</u> DECEASED 223 CLUB CANCELLED 122 OTHER 1,696 <hr/> TOTAL 2,041	CLICK HERE FOR CUMULATIVE MEMBERSHIP DATA	TOTAL FAMILY UNIT MEMBERS 2,520 FAMILY MEMBERS PAYING HALF DUES 1,288